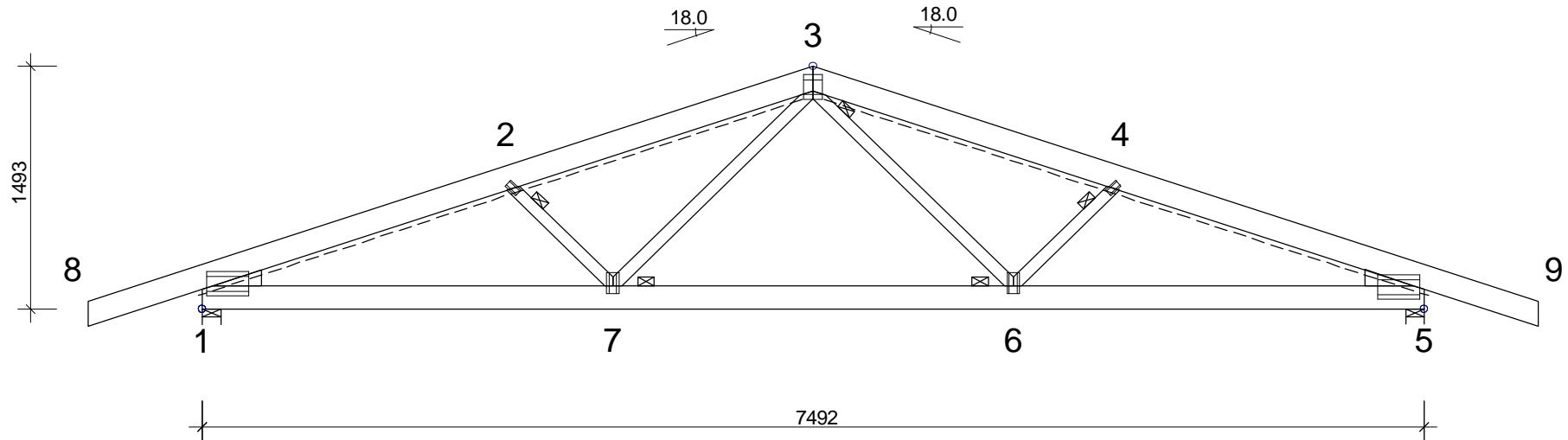


Member	Grade	Depth
TOP/C	C16	145
BTM/C	C16	145
WEB	C16	72
WEDGE	C16	97

Stub	
Left	382
Right	379

Max. transport dims.	
Max Height	1597mm
Max Length	8889mm
TREATED(protim)	

**Gang-Nail Systems Ltd**



Code for Timber Design: BS 5268 Part 3 2006

	WEB/CHORD BRACING		WEB CHEVRON BRACING
	RAFTER BRACING		WEB RAKING BRACING

STABILITY BRACING ONLY SHOWN, SEE OTHER DRAWINGS/DETAILS FOR BRACING LAYOUT.

THE BUILDING DESIGNER REMAINS RESPONSIBLE FOR ALL BRACING.

**General Settings:**

RAFTER DEAD LOAD:	685 N/m <sup>2</sup>
SNOW LOAD (BASE VALUE):	750 N/m <sup>2</sup>
CEILING DEAD LOAD:	250 N/m <sup>2</sup>
CEILING LIVE LOAD:	250 N/m <sup>2</sup>
TANK LOADING (N):	900
MAX. T/C RESTRAINT:	360mm

**General Information:**

TRUSS CENTRES: (mm)	600
TIMBER THICKNESS: (mm)	35
TOTAL No. OF TRUSSES:	4
WEIGHT / PLY: (kg)	53
PLATEAREA dm <sup>2</sup> :	
TIMBER (gross/net) m <sup>3</sup> :*	GN20 24.6
EF:SETUP /PROD.per PLY /TOTAL	0.106/0.099 12.208/0.747/15.197

CUSTOMER TO CHECK DETAILS. PLEASE SIGN AND RETURN COPY BEFORE MANUFACTURE CAN COMMENCE .....

		<b>Gang-Nail Truss</b>	
DRAWN BY:	CHECKED	JOB NO.	Turkey
dave goode			
16.07.2008	TIME: 09.29	DATE: 18.07.2008	
VERSION: 2008 SR4		C:\RCW\Job\Turkey	

**T1 - 4 no. 1-ply** SCALE 1:40(A4)

OTHER LOADS AS PER CALC. PRINT-OUT

DRAWING NUMBER | REG.

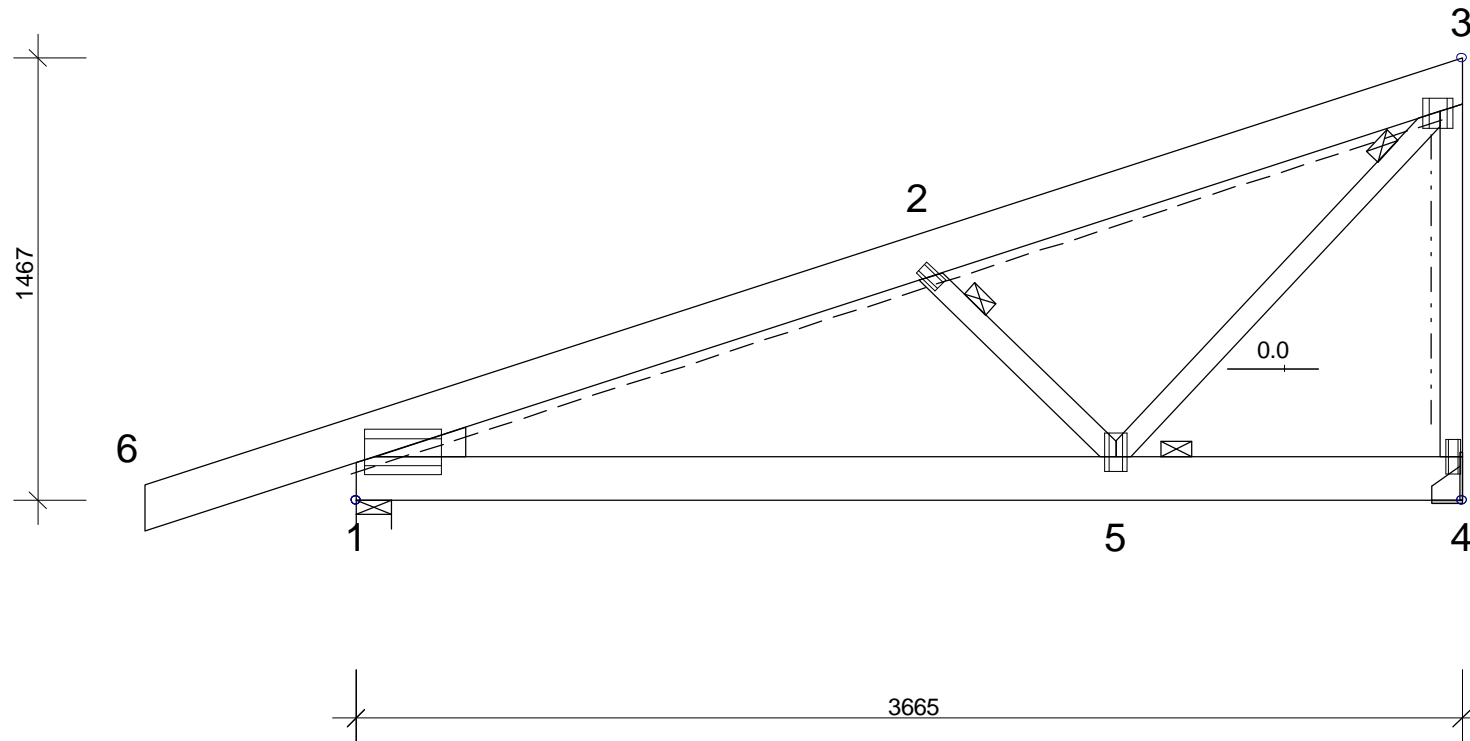
T1

Member	Grade	Depth
TOP/C	C16	145
BTM/C	C16	145
WEB	C16	72
WEDGE	C16	97

Stub	
Left	382

Max. transport dims.	
Max Height	1396 *mm
Max Length	4637 *mm
TREATED(protim)	

**Gang-Nail Systems Ltd**



Code for Timber Design: BS 5268 Part 3 2006

	WEB/CHORD BRACING		WEB CHEVRON BRACING
	RAFTER BRACING		WEB RAKING BRACING

STABILITY BRACING ONLY SHOWN, SEE OTHER DRAWINGS/DETAILS FOR BRACING LAYOUT.

THE BUILDING DESIGNER REMAINS RESPONSIBLE FOR ALL BRACING.

**General Settings:**

RAFTER DEAD LOAD:	685 N/m <sup>2</sup>
SNOW LOAD (BASE VALUE):	750 N/m <sup>2</sup>
CEILING DEAD LOAD:	250 N/m <sup>2</sup>
CEILING LIVE LOAD:	250 N/m <sup>2</sup>
TANK LOADING (N):	900
MAX. T/C RESTRAINT:	360mm

**General Information:**

TRUSS CENTRES: (mm)	600
TIMBER THICKNESS: (mm)	35
TOTAL No. OF TRUSSES:	5
WEIGHT / PLY: (kg)	28
PLATEAREA dm <sup>2</sup> :	
TIMBER (gross/net) m <sup>3</sup> :*	GN20 13.7
EF:SETUP /PROD.per PLY /TOTAL	0.056/0.051 8.720/0.444/10.941

CUSTOMER TO CHECK DETAILS. PLEASE SIGN AND RETURN COPY BEFORE MANUFACTURE CAN COMMENCE .....

		<b>Gang-Nail Truss</b>	
DRAWN BY:	CHECKED	JOB NO.	Turkey
dave goode			
16.07.2008	TIME: 09.29	DATE: 18.07.2008	
VERSION: 2008 SR4		C:\RCW\Job\Turkey	T2

**T2 - 5 no. 1-ply** SCALE 1:25(A4)

OTHER LOADS AS PER CALC. PRINT-OUT

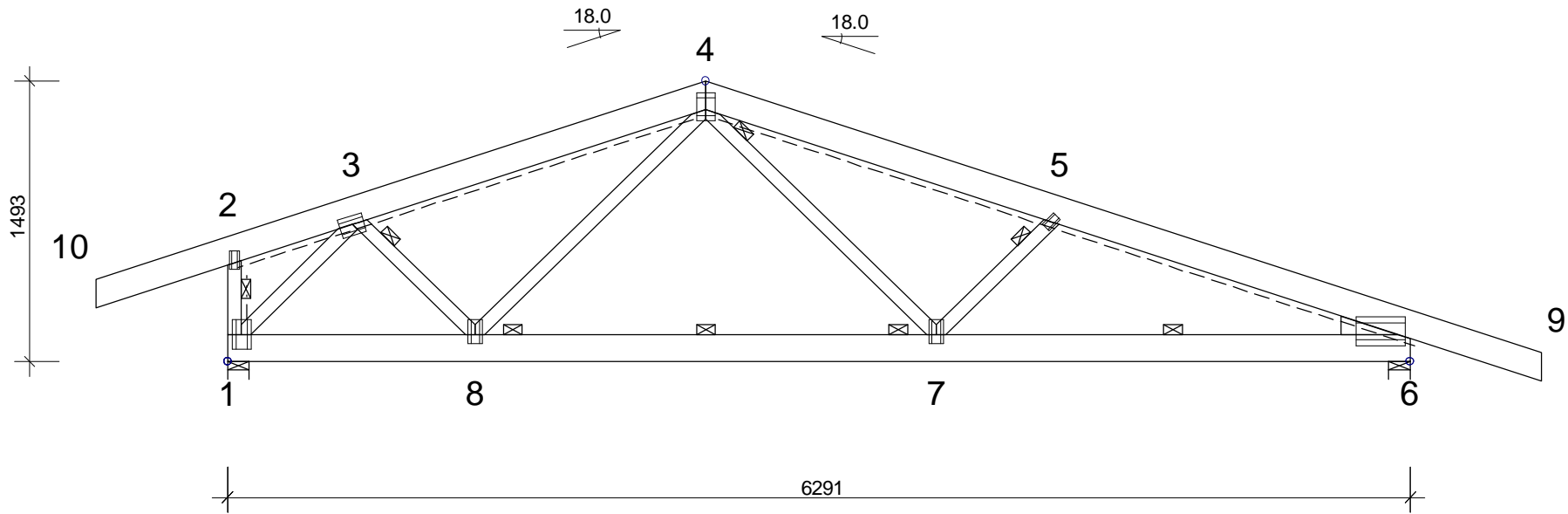
DRAWING NUMBER | REG.

Member	Grade	Depth	Total No.	Combinations
TOP/C	C16	145	T3 - 3 no.	3 no. 1-ply
BTM/C	C16	145		
WEB	C16	72		
WEDGE	C16	97		

Stub	
Left	1583
Right	379

Max. transport dims.	
Max Height	1597mm
Max Length	7689mm
TREATED(protim)	

**Gang-Nail Systems Ltd**



Code for Timber Design: BS 5268 Part 3 2006

WEB/CHORD BRACING      - - - - WEB CHEVRON BRACING      STABILITY BRACING ONLY SHOWN, SEE OTHER DRAWINGS/DETAILS FOR BRACING LAYOUT.  
 RAFTER BRACING      - - - - WEB RAKING BRACING      THE BUILDING DESIGNER REMAINS RESPONSIBLE FOR ALL BRACING.

General Settings:		General Information:	
RAFTER DEAD LOAD:	685 N/m <sup>2</sup>	TRUSS CENTRES: (mm)	600
SNOW LOAD (BASE VALUE):	750 N/m <sup>2</sup>	TIMBER THICKNESS: (mm)	35
CEILING DEAD LOAD:	250 N/m <sup>2</sup>	TOTAL No. OF TRUSSES:	3 no.
CEILING LIVE LOAD:	250 N/m <sup>2</sup>	WEIGHT / PLY: (kg)	48
TANK LOADING (N):	900	PLATEAREA dm <sup>2</sup> :	
MAX. T/C RESTRAINT:	360mm		
		TIMBER (gross/net) m <sup>3</sup> :*	GN20 22.3
		EF:SETUP /PROD.per PLY /TOTAL	0.096/0.089 13.952/0.817/16.404

**CUSTOMER TO CHECK DETAILS. PLEASE SIGN AND RETURN COPY BEFORE MANUFACTURE CAN COMMENCE .....**

Gang-Nail Truss

DRAWN BY: dave goode	CHECKED	JOB NO. Turkey	<b>T3 - 3 no.</b>	SCALE 1:35(A4)
18.07.2008	TIME: 16.08	DATE: 18.07.2008	DRAWING NUMBER	REG.
VERSION: 2008 SR4		C:\RCW\Job\Turkey		T3

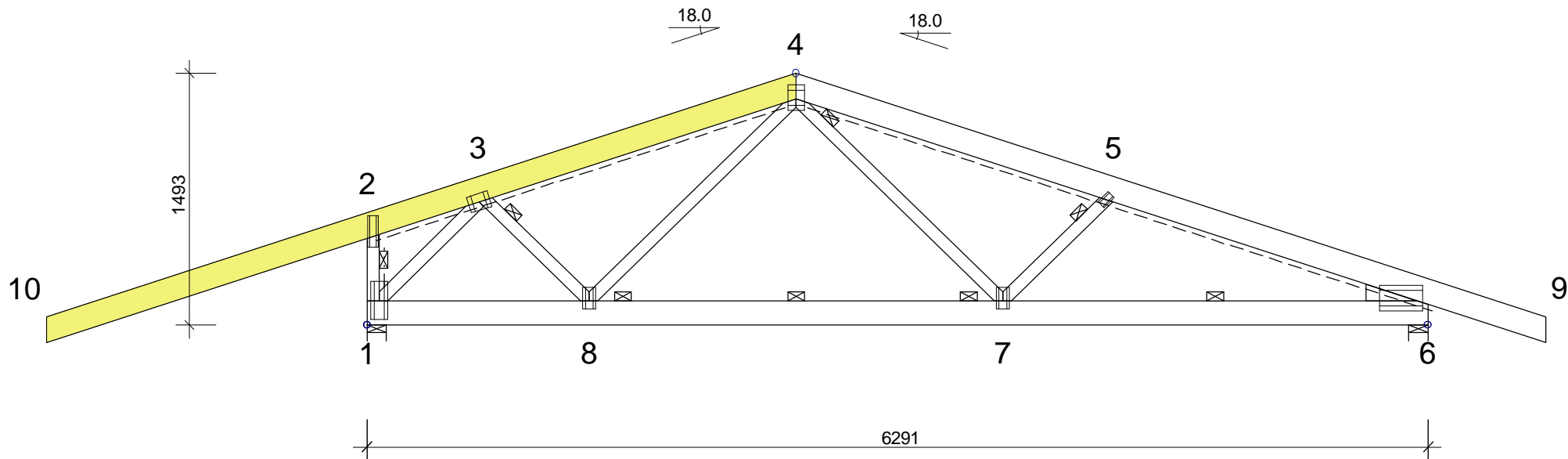
OTHER LOADS AS PER CALC. PRINT-OUT

Member	Grade	Depth
TOP/C	C16	145
BTM/C	C16	145
WEB	C16	72
WEDGE	C16	97
SCAB	C16	1x 35x145

Stub	
Left	1583
Right	379

Max. transport dims.	
Max Height	1597mm
Max Length	8889mm
TREATED(protim)	

**Gang-Nail Systems Ltd**



Code for Timber Design: BS 5268 Part 3 2006

	WEB/CHORD BRACING		WEB CHEVRON BRACING
	RAFTER BRACING		WEB RAKING BRACING

STABILITY BRACING ONLY SHOWN, SEE OTHER DRAWINGS/DETAILS FOR BRACING LAYOUT.

THE BUILDING DESIGNER REMAINS RESPONSIBLE FOR ALL BRACING.

**General Settings:**

RAFTER DEAD LOAD:	685 N/m <sup>2</sup>
SNOW LOAD (BASE VALUE):	750 N/m <sup>2</sup>
CEILING DEAD LOAD:	250 N/m <sup>2</sup>
CEILING LIVE LOAD:	250 N/m <sup>2</sup>
TANK LOADING (N):	900
MAX. T/C RESTRAINT:	360mm

**General Information:**

TRUSS CENTRES: (mm)	600
TIMBER THICKNESS: (mm)	35
TOTAL No. OF TRUSSES:	2
WEIGHT / PLY: (kg)	64
PLATEAREA dm <sup>2</sup> :	
TIMBER (gross/net) m <sup>3</sup> :*	GN20 25.0
EF:SETUP /PROD.per PLY /TOTAL	0.126/0.119
	13.952/0.817/15.587

CUSTOMER TO CHECK DETAILS. PLEASE SIGN AND RETURN COPY BEFORE MANUFACTURE CAN COMMENCE .....

		<b>Gang-Nail Truss</b>	
DRAWN BY:	CHECKED	JOB NO.	Turkey
dave goode			
16.07.2008	TIME: 09.27	DATE: 18.07.2008	
VERSION: 2008 SR4		C:\RCW\Job\Turkey	T4

**T4 - 2 no. 1-ply** SCALE 1:35(A4)

OTHER LOADS AS PER CALC. PRINT-OUT

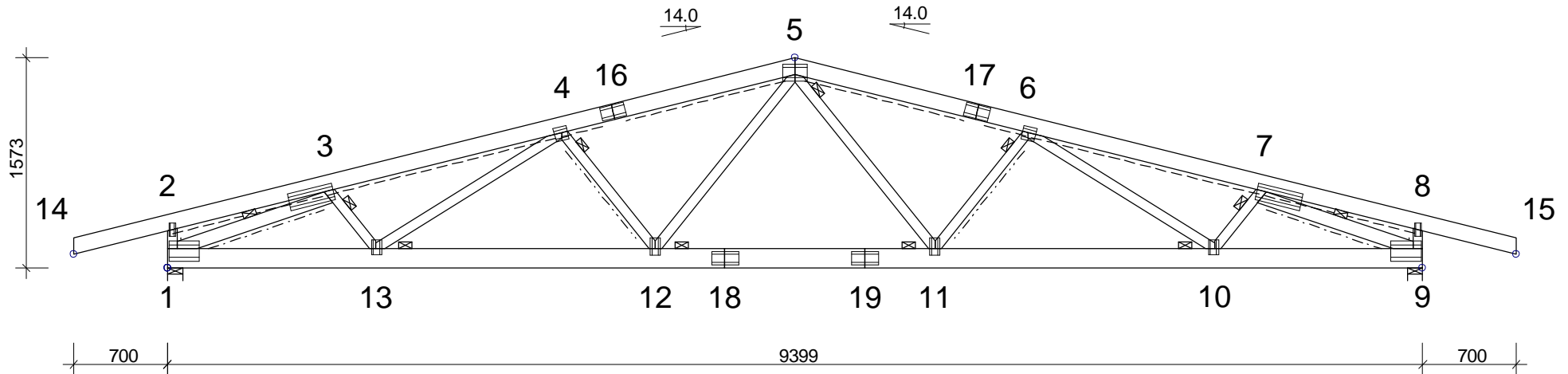
DRAWING NUMBER | REG.

Member	Grade	Depth
TOP/C	C16	120
BTM/C	C16	145
WEB	C16	72
1-3	C16	97
7-9	C16	97

Stub	
Left	1114
Right	1114

Max. transport dims.	
Max Height	1573mm
Max Length	10799mm
TREATED(protim)	

**Gang-Nail Systems Ltd**



Code for Timber Design: BS 5268 Part 3 2006

	WEB/CHORD BRACING		WEB CHEVRON BRACING
	RAFTER BRACING		WEB RAKING BRACING

STABILITY BRACING ONLY SHOWN, SEE OTHER DRAWINGS/DETAILS FOR BRACING LAYOUT.

THE BUILDING DESIGNER REMAINS RESPONSIBLE FOR ALL BRACING.

**General Settings:**

RAFTER DEAD LOAD:	685 N/m <sup>2</sup>
SNOW LOAD (BASE VALUE):	750 N/m <sup>2</sup>
CEILING DEAD LOAD:	250 N/m <sup>2</sup>
CEILING LIVE LOAD:	250 N/m <sup>2</sup>
TANK LOADING (N):	900
MAX. T/C RESTRAINT:	360mm

**General Information:**

TRUSS CENTRES: (mm)	600
TIMBER THICKNESS: (mm)	35
TOTAL No. OF TRUSSES:	11
WEIGHT / PLY: (kg)	69
PLATEAREA dm <sup>2</sup> :	
TIMBER (gross/net) m <sup>3</sup> :*	GN20 64.9
EF:SETUP /PROD.per PLY /TOTAL	0.136/0.127
	38.154/2.236/62.751

CUSTOMER TO CHECK DETAILS. PLEASE SIGN AND RETURN COPY BEFORE MANUFACTURE CAN COMMENCE .....

		<b>Gang-Nail Truss</b>	
DRAWN BY:	CHECKED	JOB NO.	
dave goode		Turkey	
16.07.2008	TIME: 09.12	DATE: 18.07.2008	
VERSION: 2008 SR4		C:\RCW\Job\Turkey	T5

**T5 - 11 no. 1-ply** SCALE 1:45(A4)

OTHER LOADS AS PER CALC. PRINT-OUT

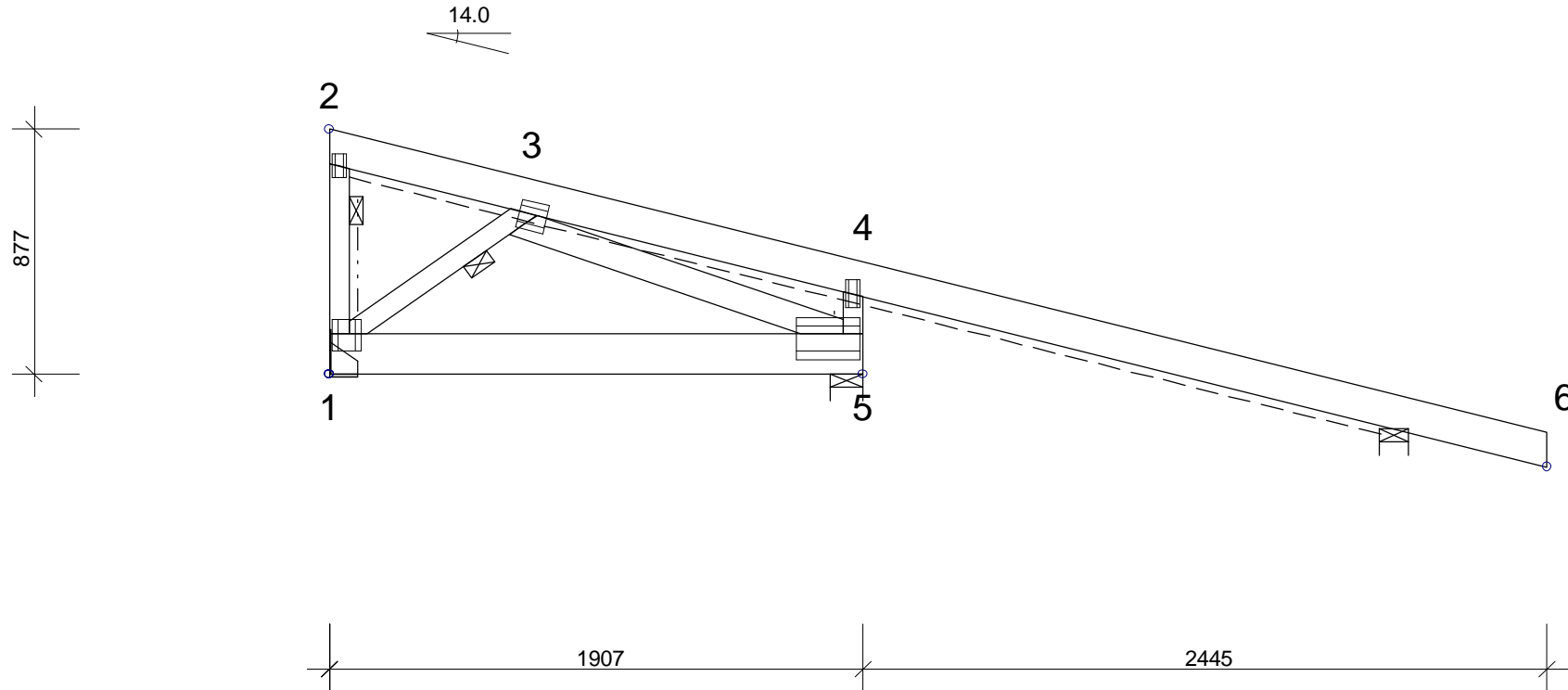
DRAWING NUMBER | REG.

Member	Grade	Depth
TOP/C	C16	120
BTM/C	C16	145
WEB	C16	72
3-5	C16	97

Stub	
Right	1114

Max. transport dims.	
Max Height	851 *mm
Max Length	4515 *mm
TREATED(protim)	

**Gang-Nail Systems Ltd**



Code for Timber Design: BS 5268 Part 3 2006

	WEB/CHORD BRACING		WEB CHEVRON BRACING
	RAFTER BRACING		WEB RAKING BRACING

STABILITY BRACING ONLY SHOWN, SEE OTHER DRAWINGS/DETAILS FOR BRACING LAYOUT.

THE BUILDING DESIGNER REMAINS RESPONSIBLE FOR ALL BRACING.

**General Settings:**

RAFTER DEAD LOAD:	685 N/m <sup>2</sup>
SNOW LOAD (BASE VALUE):	750 N/m <sup>2</sup>
CEILING DEAD LOAD:	250 N/m <sup>2</sup>
CEILING LIVE LOAD:	250 N/m <sup>2</sup>
TANK LOADING (N):	900
MAX. T/C RESTRAINT:	360mm

**General Information:**

TRUSS CENTRES: (mm)	600
TIMBER THICKNESS: (mm)	35
TOTAL No. OF TRUSSES:	8
WEIGHT / PLY: (kg)	20
PLATEAREA dm2 :	
TIMBER (gross/net) m3 :*	GN20 13.0
EF:SETUP /PROD.per PLY /TOTAL	0.041/0.036
	11.090/0.338/13.790

CUSTOMER TO CHECK DETAILS. PLEASE SIGN AND RETURN COPY BEFORE MANUFACTURE CAN COMMENCE .....

		<b>Gang-Nail Truss</b>	
DRAWN BY:	CHECKED	JOB NO.	Turkey
dave goode			
16.07.2008	TIME: 09.27	DATE: 18.07.2008	
VERSION: 2008 SR4		C:\RCW\Job\Turkey	

**T6 - 8 no. 1-ply** SCALE 1:25(A4)

OTHER LOADS AS PER CALC. PRINT-OUT

DRAWING NUMBER	REG.
T6	

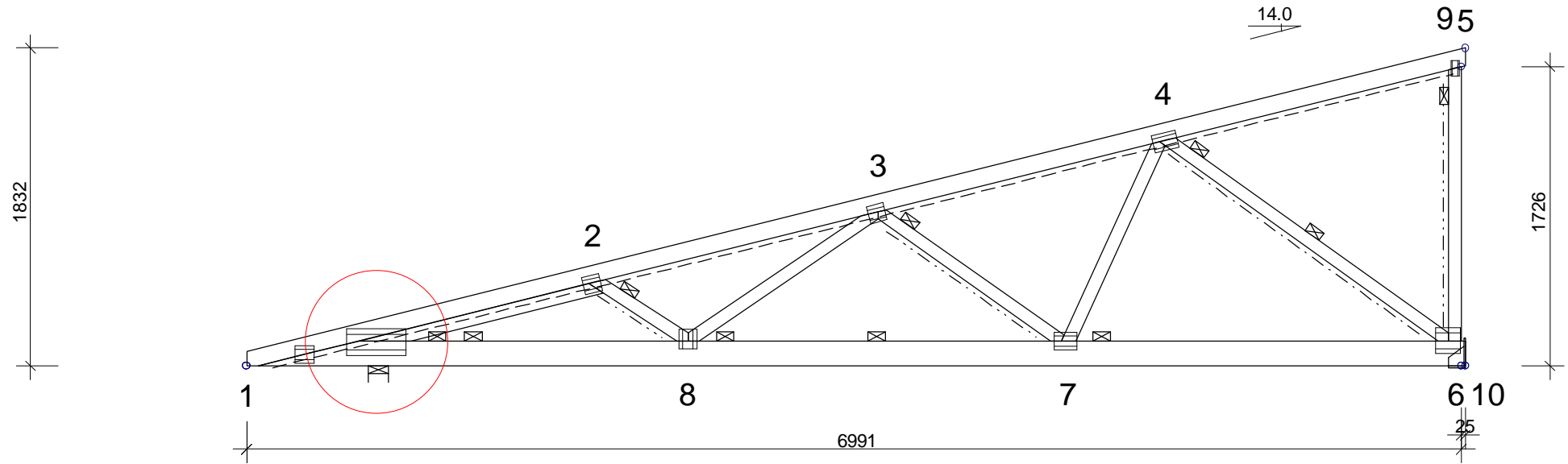
Member	Grade	Depth
TOP/C	C16	97
BTM/C	C16	145
WEB	C16	72

Cantilever	
Left	633
Right	

Horn	
Left	
Right	25

Max. transport dims.	
Max Height	1832mm
Max Length	7016mm
TREATED(protim)	

**Gang-Nail Systems Ltd**



Code for Timber Design: BS 5268 Part 3 2006

	WEB/CHORD BRACING		WEB CHEVRON BRACING
	RAFTER BRACING		WEB RAKING BRACING

STABILITY BRACING ONLY SHOWN, SEE OTHER DRAWINGS/DETAILS FOR BRACING LAYOUT.

THE BUILDING DESIGNER REMAINS RESPONSIBLE FOR ALL BRACING.

**General Settings:**

RAFTER DEAD LOAD:	685 N/m <sup>2</sup>
SNOW LOAD (BASE VALUE):	750 N/m <sup>2</sup>
CEILING DEAD LOAD:	250 N/m <sup>2</sup>
CEILING LIVE LOAD:	250 N/m <sup>2</sup>
TANK LOADING (N):	900
MAX. T/C RESTRAINT:	360mm

**General Information:**

TRUSS CENTRES: (mm)	600
TIMBER THICKNESS: (mm)	35
TOTAL No. OF TRUSSES:	7
WEIGHT / PLY: (kg)	44
PLATE AREA dm <sup>2</sup> :	
TIMBER (gross/net) m <sup>3</sup> :	GN20 29.6
EF: SETUP / PROD. per PLY / TOTAL	0.089/0.081 18.567/1.157/26.665

CUSTOMER TO CHECK DETAILS. PLEASE SIGN AND RETURN COPY BEFORE MANUFACTURE CAN COMMENCE .....

		<b>Gang-Nail Truss</b>	
DRAWN BY:	CHECKED	JOB NO.	Turkey
dave goode			
16.07.2008	TIME: 09.26	DATE: 18.07.2008	
VERSION: 2008 SR4		C:\RCW\Job\Turkey	T7

**T7 - 7 no. 1-ply** SCALE 1:35(A4)

OTHER LOADS AS PER CALC. PRINT-OUT

DRAWING NUMBER | REG.

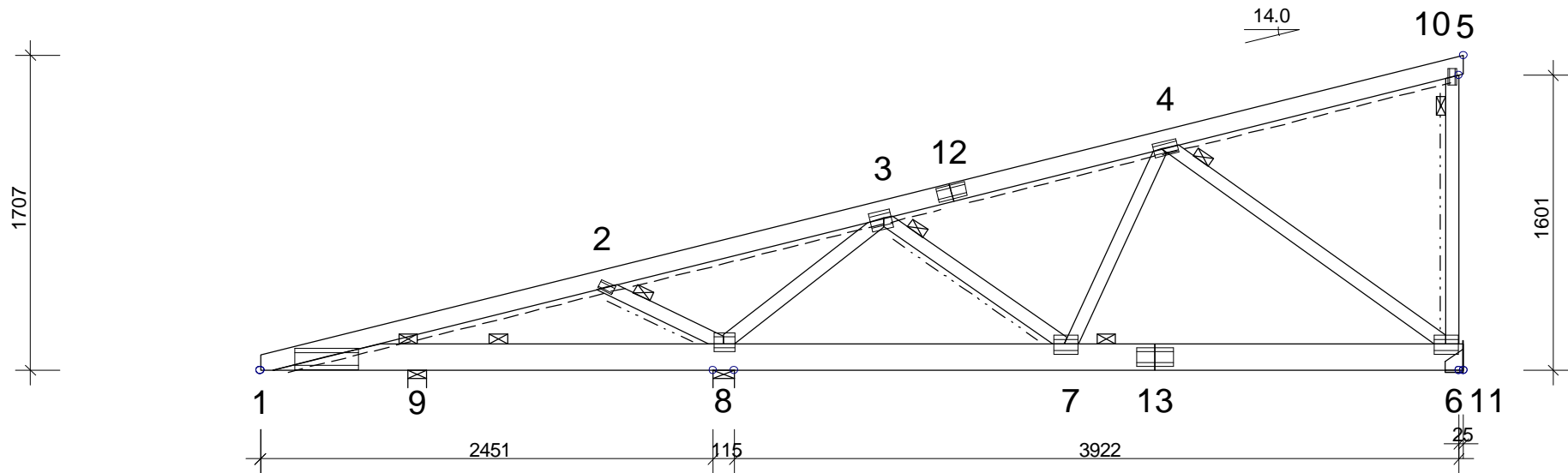
Member	Grade	Depth
TOP/C	C16	97
BTM/C	C16	145
WEB	C16	72

Cantilever	
Left	733
Right	

Horn	
Left	
Right	25

Max. transport dims.	
Max Height	1707mm
Max Length	6513mm
TREATED(protim)	

**Gang-Nail Systems Ltd**



Code for Timber Design: BS 5268 Part 3 2006

	WEB/CHORD BRACING		WEB CHEVRON BRACING
	RAFTER BRACING		WEB RAKING BRACING

STABILITY BRACING ONLY SHOWN, SEE OTHER DRAWINGS/DETAILS FOR BRACING LAYOUT.

THE BUILDING DESIGNER REMAINS RESPONSIBLE FOR ALL BRACING.

**General Settings:**

RAFTER DEAD LOAD:	685 N/m <sup>2</sup>
SNOW LOAD (BASE VALUE):	750 N/m <sup>2</sup>
CEILING DEAD LOAD:	250 N/m <sup>2</sup>
CEILING LIVE LOAD:	250 N/m <sup>2</sup>
TANK LOADING (N):	900
MAX. T/C RESTRAINT:	360mm

**General Information:**

TRUSS CENTRES: (mm)	600
TIMBER THICKNESS: (mm)	35
TOTAL No. OF TRUSSES:	7
WEIGHT / PLY: (kg)	39
PLATEAREA dm <sup>2</sup> :	
TIMBER (gross/net) m <sup>3</sup> :*	GN80X 7.82 / GN20 19.9
EF:SETUP /PROD.per PLY /TOTAL	0.079/0.072
	21.164/1.338/30.533

CUSTOMER TO CHECK DETAILS. PLEASE SIGN AND RETURN COPY BEFORE MANUFACTURE CAN COMMENCE .....

		<b>Gang-Nail Truss</b>	
DRAWN BY:	CHECKED	JOB NO.	
dave goode		Turkey	
15.07.2008	TIME: 16.57	DATE: 18.07.2008	
VERSION: 2008 SR4		C:\RCW\Job\Turkey	

**T8 - 7 no. 1-ply** SCALE 1:35(A4)

OTHER LOADS AS PER CALC. PRINT-OUT

DRAWING NUMBER | REG.

T8

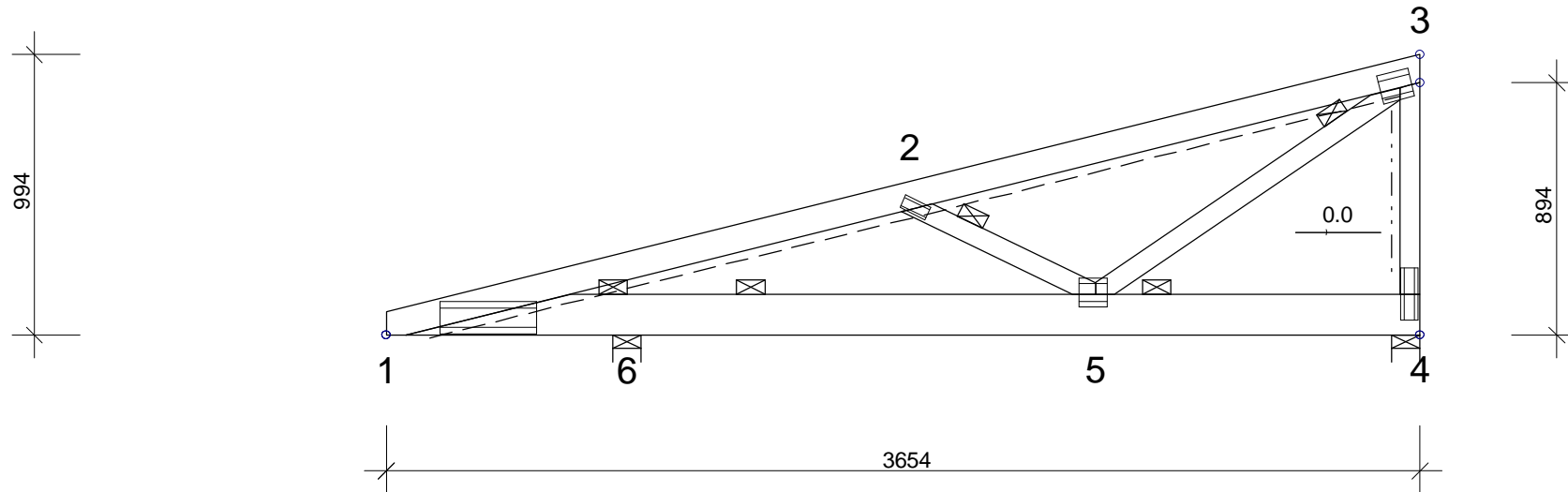


Member	Grade	Depth
TOP/C	C16	97
BTM/C	C16	145
WEB	C16	72

Cantilever	
Left	733

Max. transport dims.	
Max Height	994mm
Max Length	3654mm
TREATED(protim)	

**Gang-Nail Systems Ltd**



Code for Timber Design: BS 5268 Part 3 2006

	WEB/CHORD BRACING		WEB CHEVRON BRACING
	RAFTER BRACING		WEB RAKING BRACING

STABILITY BRACING ONLY SHOWN, SEE OTHER DRAWINGS/DETAILS FOR BRACING LAYOUT.

THE BUILDING DESIGNER REMAINS RESPONSIBLE FOR ALL BRACING.

**General Settings:**

RAFTER DEAD LOAD:	685 N/m <sup>2</sup>
SNOW LOAD (BASE VALUE):	750 N/m <sup>2</sup>
CEILING DEAD LOAD:	250 N/m <sup>2</sup>
CEILING LIVE LOAD:	250 N/m <sup>2</sup>
TANK LOADING (N):	900
MAX. T/C RESTRAINT:	360mm

**General Information:**

TRUSS CENTRES: (mm)	600
TIMBER THICKNESS: (mm)	35
TOTAL No. OF TRUSSES:	6
WEIGHT / PLY: (kg)	20
PLATEAREA dm <sup>2</sup> :	
TIMBER (gross/net) m3 :*	GN80X 7.82 / GN20 7.6
EF:SETUP /PROD.per PLY /TOTAL	0.041/0.036
	10.315/0.464/13.097

CUSTOMER TO CHECK DETAILS. PLEASE SIGN AND RETURN COPY BEFORE MANUFACTURE CAN COMMENCE .....

		<b>Gang-Nail Truss</b>	
DRAWN BY:	CHECKED	JOB NO.	
dave goode		Turkey	
18.07.2008	TIME: 16.10	DATE: 18.07.2008	
VERSION: 2008 SR4		C:\RCW\Job\Turkey	

**T9 - 6 no. 1-ply** SCALE 1:25(A4)

OTHER LOADS AS PER CALC. PRINT-OUT

DRAWING NUMBER | REG.

T9